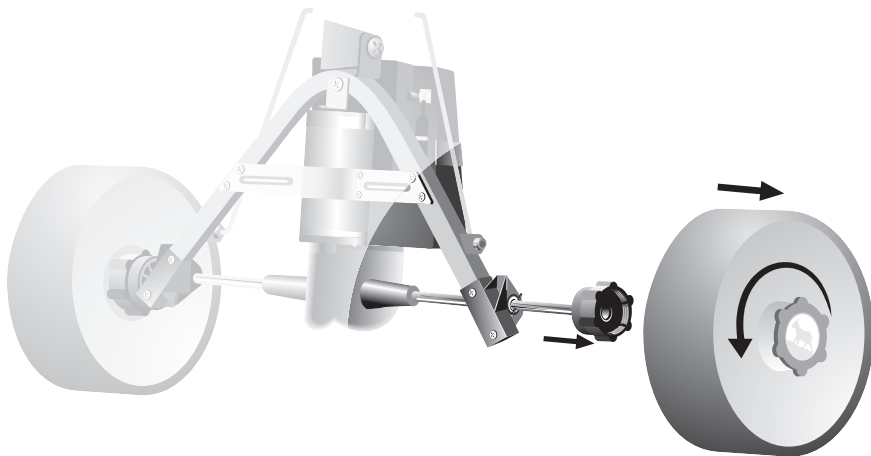


Please read these instructions carefully.

REPLACING THE WHEEL CLUTCHES**AKIT20**

No tools are required for this procedure.

1. Turn the green release cap in the centre of the wheels anti-clockwise and pull them off the drive spindle.
2. The wheel clutches are located behind the wheels. There is a metal clip on each clutch visible when the wheels are out of the way - do not try to remove these. Simply pull the clutches off the drive spindle by hand.
3. The clutches are marked "L" and "R" for reference. Depending on the set-up of your Hill Billy, the clutch marked "L" may not be fitted to the left of your Hill Billy.
4. Fit the new clutches, ensuring the "L" and "R" remain on the same side as the old units
5. Please note the clutches locate on the drive pins which protrude from the spindle - they must be fully engaged with these pins when fitted.
6. To re-attach the wheels, first ensure the green release cap is returned to the fully clockwise (lock) position before putting the wheel back on. Do not turn the release cap anti-clockwise while re-fitting the wheels this may prevent them locating properly.
7. Slide the wheel onto the spindle, turn the complete wheel to align it with the clutch, and push on firmly to lock it in place. Again, please note, do not turn the release cap anti-clockwise when re-fitting the wheels.
8. The wheels can be fitted to either side of the Hill Billy.



Hill Billy Powered Golf Trolley

PO Box 533 Sittingbourne Kent ME10 9BX England
Telephone 01795 413830 Fax 01795 413831